



Because privacy matters!



# **Kubebooth**

## **Supply Arrangement Catalogue**

### **Government of Canada**



SA E60PQ-140003-098



## OVERVIEW

GCworkplace is the shared vision for the Government of Canada workplace, established and supported by the Government of Canada Fit-up Standards. GCworkplace guides the delivery of workplace modernization projects and solutions offered by Public Services and Procurement Canada (PSPC) to federal organizations.

The Government of Canada Workplace Fit-up Standards and the supporting tools provide the foundation for creating innovative activity-based work environments. These environments accommodate diverse work styles, meet accessibility requirements, support alternative work strategies, incorporate modern technology, and integrate sustainable design principles.

## GCworkplace Dimensions

FLEXIBLE



01

HEALTHY



02

EFFICIENT



03

INCLUSIVE



04

COLLABORATIVE



05

DIGITAL



06

GREEN



07

## PRODUCT INFO & ORDERING ITEMS

The exterior finish of all products is G1 (Black or White).

Freight delivery charges are to be listed as a separate line item on the purchase order.

Installation charges are to be quoted on an order by order basis and listed as a separate line item on the purchase order.

Delivery is stated as 3 -5 weeks after receipt of order, and installation will be carried out during normal working hours, eg. 9:00 AM to 5:00 PM, Monday through Friday.

**We accept visa and mastercard credit cards with an additional 2.4% charge on the final amount.**

**CALL UPS AGAINST THIS  
SUPPLY ARRANGEMENT  
MUST BE ISSUED TO**

### **KUBEBOOTH INC.**

40 Penn Dr. , Toronto  
Ontario M9L 2A9  
[www.kubebooth.com](http://www.kubebooth.com)  
[info@kubebooth.com](mailto:info@kubebooth.com)

# AUTHORIZED KUBEBOOTH DEALERS



## ATLANTIC REGION

### **Atlantic Business Interiors**

#### **Nova Scotia**

30 Troop Avenue  
Dartmouth, Nova Scotia  
B3B 1Z1  
Phone: (902) 468-3200  
Fax: (902) 468-5051

#### **New Brunswick – Moncton**

Phone: (506) 866-6738

#### **New Brunswick – Saint John**

28 McIlveen Drive, Unit 12  
Saint John, New Brunswick  
E2J 4Y7  
Phone: (506) 672-0750  
Fax: (506) 674-1435

#### **Newfoundland and Labrador**

21 Mews Place  
St. John's, Newfoundland  
A1B 4N2  
Phone: (709) 576-6405  
Fax: (709) 576-6418

### **Atlantic Business Interiors**

#### **Prince Edward Island**

25 Fourth Street, Suite 400  
Charlottetown,  
Prince Edward Island  
C1E 2B4  
Phone: (902) 566-9700  
Fax: (902) 566-4978

## ONTARIO REGION

### **Contemporary Office Interiors**

#### **GTA Distribution Center**

Phone 416-364-5111  
Address 6225 Danville Road Mississauga,  
ON L5T2H7

#### **Toronto**

Phone 416-364-5111  
Address 56 Temperance St, 2nd Floor  
Toronto, ON M5H 3V5

### **The Business Line Inc.**

#### **GTA**

7282 Black Walnut Trail,  
Mississauga, ON, L5N 7M6  
Phone: (905) 785-8120  
Cell: (647) 401-8120  
Email: sam.paul@tbl.ca

## NATIONAL CAPITAL REGION

### **Brezach Solutions Inc.**

5380 Canotek Rd, Unit 11  
Ottawa, ON, K1J 1H7  
Phone: 613-742-0051  
Email: info@brezach.com

### **Capital Office Interiors**

16 Antares Drive  
Ottawa, Ontario  
K2E 7Y7  
Phone: (613) 723-2000

### **Sakku Ventures**

Phone: (613) 714-9990  
Email: sales@sakkuventures.ca



A faint, white line-art diagram of a booth layout is visible on the left side of the image. It shows a rectangular booth with a desk, a chair, and various equipment like a monitor and a printer.

# THE SIGNATURE COLLECTION

[www.kubebooth.com](http://www.kubebooth.com)



# SIGNATURE COLLECTION



## KSelfi Signature Booth

The KSelfi Signature Booth by Kubebooth is a premium soundproof solution designed for one person, perfect for virtual meetings, quick calls, and ad hoc discussions.



### STANDARD FEATURES

- 36 dB Certified noise reduction
- 100 air exchanges/hour
- Mobile with casters
- Energy efficient
- BIFMA Level 2 approved
- ISO 14001, ISO 9001, MAS, UL/ULC certified
- Pre-engineered knockout hole for sprinklers
- Plug n Play
- Worktop included W: 20" x L: 12"

OCCUPANTS: 1

VISUAL PRIVACY: Low-Medium

ACOUSTIC PRIVACY: High

**MSRP: \$20,172**

### TECHNICAL INFO

Dimensions:

Overall- W: 44" - D: 37" - H: 88"

Inside- W: 36" - D: 36" - H: 80"

Door - H: 88" x W: 32"

Rear Panel - H: 88" x W: 44"

Front Side Panel - H: 88" x W: 12"

Weight: 800 lbs/362 kg

Data Center: UL approved, 1 USB A port,  
1 USB C port, 2 Simplex outlets  
Motion detector (controls lights & fan)

10mm clear tempered glass  
Ceramic painted borders  
12V LED light bar magnet, 3500k, 12VDC  
Galvanized steel frames  
10ft cord 120v/15Amp  
D pull handle  
Safety Stripe

## RANGE OF FINISHES

### EXTERIOR



White



Black

### CARPET



Light Gray



Dark Gray

### DOOR HANDLE



Black



Silver

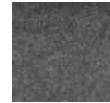
### INTERIOR



EG-04 Silver Gray



EG-08 Moon Gray



EG-10 Deep Gray



EG-02 Water Gray



EG-20 Deep Blue



EG-23 Turquoise



EG-30 Dark Camel

### ALUMINUM CORNERS



White



Black



Gray

### ADD ONs

Seismic bracing  
One-touch LCD control panel  
LCD TV mount bracing  
White glass board  
Personalized company branding  
External fire extinguisher unit

Ethernet ports  
Bluetooth speakers  
Frosted film glass  
Occupancy lights





# SIGNATURE COLLECTION



## KSelfi Plus Signature Booth (Government Only)

The KSelfi Plus by Kubebooth is a single-person soundproof office pod designed to enhance productivity and well-being in the workplace. This compact booth provides a private enclave for focused tasks, quick rejuvenation, or uninterrupted learning.



### STANDARD FEATURES

- 36 dB Certified noise reduction
- 100 air exchanges/hour
- Mobile with casters
- Energy efficient
- BIFMA Level 2 approved
- ISO 14001, ISO 9001, MAS, UL/ULC certified
- Pre-engineered knockout hole for sprinklers
- Plug n Play
- Worktop not included

OCCUPANTS: 1

VISUAL PRIVACY: Low-Medium

ACOUSTIC PRIVACY: High

**MSRP: \$27,906**

### TECHNICAL INFO

Dimensions:

Overall- W: 44" - D: 48" - H: 88"

Inside- W: 36" - D: 47" - H: 80"

Door - H: 88" x W: 32"

Front Side Panel - H: 88" x W: 12"

Weight: 950 lbs/431 kg

Data Center: UL approved, 1 USB A port,  
1 USB C port, 2 Simplex outlets  
Motion detector (controls lights & fan)

10mm clear tempered glass

Ceramic painted borders

12V LED light bar magnet, 3500k, 12VDC

Galvanized steel frames

10ft cord 120v/15Amp

D pull handle

Safety Stripe

## RANGE OF FINISHES

### EXTERIOR



White



Black

### CARPET



Light Gray



Dark Gray

### DOOR HANDLE



Black



Silver

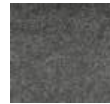
### INTERIOR



EG-04 Silver Gray



EG-08 Moon Gray



EG-10 Deep Gray



EG-02 Water Gray



EG-20 Deep Blue



EG-23 Turquoise



EG-30 Dark Camel

### ALUMINUM CORNERS



White



Black

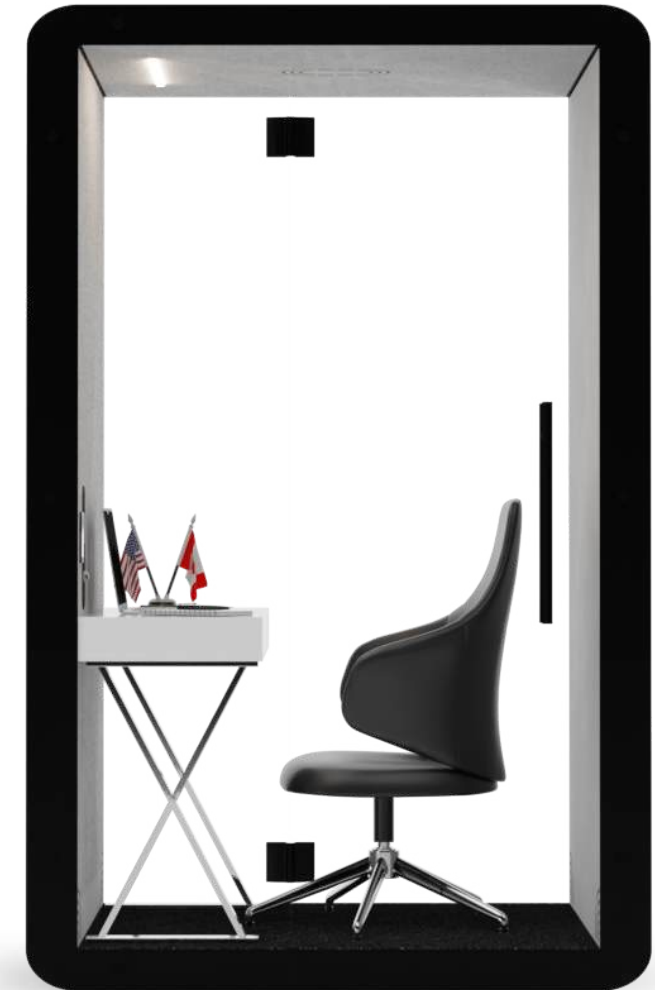


Gray

### ADD ONs

Seismic bracing  
One-touch LCD control panel  
LCD TV mount bracing  
White glass board  
Personalized company branding  
External fire extinguisher unit

Ethernet ports  
Bluetooth speakers  
Frosted film glass  
Occupancy lights



# SIGNATURE COLLECTION



## Kwe Plus Signature Booth

The Kwe Plus Signature Booth is perfect for groups of 2-4 people, offering a spacious yet private area for meetings, brainstorming sessions, or team collaboration. Its soundproof design ensures quiet and comfort, making it a stylish and practical addition to any workspace.



### STANDARD FEATURES

- 36 dB Certified noise reduction
- 100 air exchanges/hour
- Mobile with casters
- Extendable for 6 and 8 people
- Energy efficient
- BIFMA Level 2 approved
- ISO 14001, ISO 9001, MAS, UL/ULC certified
- Pre-engineered knockout hole for sprinklers
- Plug n Play
- Worktop included: L: 31" x W: 24"

OCCUPANTS: 2-4

VISUAL PRIVACY: Low-Medium

ACOUSTIC PRIVACY: High

**MSRP: \$36,304**

### TECHNICAL INFO

Dimensions:

Overall- W: 88" - D: 48" - H: 88"

Inside- W: 80" - D: 47" - H: 80"

Door - H: 88" x W: 32"

Front Side Panels - H: 88" x W: 28"

Rear Panel - H: 88" x W: 44"

Weight: 1525 lbs/692 kg

Data Center: UL approved, 1 USB A port,  
1 USB C port, 2 Simplex outlets  
Motion detector (controls lights & fan)

10mm clear tempered glass  
Ceramic painted borders  
12V LED light bar magnet, 3500k, 12VDC  
Galvanized steel frames  
10ft cord 120v/15Amp  
Safety Stripe

## RANGE OF FINISHES

### EXTERIOR



White



Black

### CARPET



Light Gray



Dark Gray

### DOOR HANDLE



Black



Silver

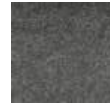
### INTERIOR



EG-04 Silver Gray



EG-08 Moon Gray



EG-10 Deep Gray



EG-02 Water Gray



EG-20 Deep Blue



EG-23 Turquoise



EG-30 Dark Camel

### ALUMINUM CORNERS



White



Black



Gray

### ADD ONs

Seismic bracing  
One-touch LCD control panel  
LCD TV mount bracing  
White glass board  
Personalized company branding  
External fire extinguisher unit

Ethernet ports  
Bluetooth speakers  
Frosted film glass  
Occupancy lights









---

# THE FLOORLESS COLLECTION

---

**NOTE:** The floorless collection needs to be drilled to the floor for safety purposes.

[www.kubebooth.com](http://www.kubebooth.com)



# FLOORLESS COLLECTION



## KSelfi Floorless Booth

The KSelfi Floorless Booth offers a sleek, soundproof workspace with step-free entry, ensuring accessibility for all users while providing privacy and productivity in any office setting.



### STANDARD FEATURES

Class A noise reduction  
100 air exchanges/hour  
Energy efficient  
BIFMA Level 2 approved  
ISO 14001, ISO 9001, MAS, UL/ULC certified  
Pre-engineered knockout hole for sprinklers  
Plug n Play  
Worktop included W: 20" x L: 12"

OCCUPANTS: 1

VISUAL PRIVACY: Low-Medium

ACOUSTIC PRIVACY: Medium-High

**MSRP: \$22,820**

### TECHNICAL INFO

Dimensions:

Overall- W: 44" - D: 37" - H: 88"

Inside- W: 36" - D: 36" - H: 84"

Door - H: 88" x W: 32"

Rear Panel - H: 88" x W: 44"

Front Side Panel - H: 88" x W: 12"

Weight: 750 lbs/340 kg

Data Center: UL approved, 1 USB A port,  
1 USB C port, 2 Simplex outlets  
Motion detector (controls lights & fan)

10mm clear tempered glass  
Ceramic painted borders  
12V LED light bar magnet, 3500k, 12VDC  
Galvanized steel frames  
10ft cord 120v/15Amp  
Safety Stripe

## RANGE OF FINISHES

### EXTERIOR



White



Black

### CARPET



Light Gray



Dark Gray

### DOOR HANDLE



Black



Silver

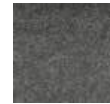
### INTERIOR



EG-04 Silver Gray



EG-08 Moon Gray



EG-10 Deep Gray



EG-02 Water Gray



EG-20 Deep Blue



EG-23 Turquoise



EG-30 Dark Camel

### ALUMINUM CORNERS



White



Black



Gray

### ADD ONs

Seismic bracing  
One-touch LCD control panel  
LCD TV mount bracing  
White glass board  
Personalized company branding  
External fire extinguisher unit

Ethernet ports  
Bluetooth speakers  
Frosted film glass  
Occupancy lights



# FLOORLESS COLLECTION



## KSelfi Plus Floorless Booth (Government Only)

The KSelfi Plus Floorless Booth offers a spacious, soundproof environment for virtual meetings and focused work, designed for accessibility and comfort while seamlessly integrating into any office aesthetic.



### STANDARD FEATURES

- Class A noise reduction
- 100 air exchanges/hour
- Energy efficient
- BIFMA Level 2 approved
- ISO 14001, ISO 9001, MAS, UL/ULC certified
- Pre-engineered knockout hole for sprinklers
- Plug n Play
- Worktop not included

OCCUPANTS: 1

VISUAL PRIVACY: Low-Medium

ACOUSTIC PRIVACY: Medium-High

**MSRP: \$30,944**

### TECHNICAL INFO

#### Dimensions:

Overall- W: 44" - D: 48" - H: 88"

Inside- W: 36" - D: 47" - H: 84"

Door - H: 88" x W: 32"

Rear Panel - H: 88" x W: 44"

Front Side Panel - H: 88" x W: 12"

Weight: 900 lbs/408 kg

Data Center: UL approved, 1 USB A port,  
1 USB C port, 2 Simplex outlets  
Motion detector (controls lights & fan)

10mm clear tempered glass  
Ceramic painted borders  
12V LED light bar magnet, 3500k, 12VDC  
Galvanized steel frames  
10ft cord 120v/15Amp  
Safety Stripe

## RANGE OF FINISHES

### EXTERIOR



White



Black

### CARPET



Light Gray



Dark Gray

### DOOR HANDLE



Black



Silver

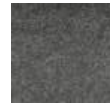
### INTERIOR



EG-04 Silver Gray



EG-08 Moon Gray



EG-10 Deep Gray



EG-02 Water Gray



EG-20 Deep Blue



EG-23 Turquoise



EG-30 Dark Camel

### ALUMINUM CORNERS



White



Black



Gray

### ADD ONs

Seismic bracing  
One-touch LCD control panel  
LCD TV mount bracing  
White glass board  
Personalized company branding  
External fire extinguisher unit

Ethernet ports  
Bluetooth speakers  
Frosted film glass  
Occupancy lights



# FLOORLESS COLLECTION



## Kwe Plus Floorless Booth

Enhance teamwork with the Kwe Plus Floorless Booth, designed for 2-4 users, offering customizable finishes, advanced connectivity options, and a serene environment for productive discussions.



### STANDARD FEATURES

- Class A noise reduction
- 100 air exchanges/hour
- Extendable for 6 and 8 people
- Energy efficient
- BIFMA Level 2 approved
- ISO 14001, ISO 9001, MAS, UL/ULC certified
- Pre-engineered knockout hole for sprinklers
- Plug n Play
- Worktop included: L: 31" x W: 24"

OCCUPANTS: 2-4

VISUAL PRIVACY: Low-Medium

ACOUSTIC PRIVACY: Medium-High

**MSRP: \$39,590**

### TECHNICAL INFO

#### Dimensions:

Overall- W: 88" - D: 48" - H: 88"

Inside- W: 80" - D: 47" - H: 84"

Door - H: 88" x W: 32"

Rear Panel - H: 88" x W: 44"

Front Side Panels - H: 88" x W: 28"

Weight: 1150 lbs/527 kg

Data Center: UL approved, 1 USB A port,  
1 USB C port, 2 Simplex outlets  
Motion detector (controls lights & fan)

10mm clear tempered glass

Ceramic painted borders

12V LED light bar magnet, 3500k, 12VDC

Galvanized steel frames

10ft cord 120v/15Amp

Safety Stripe

## RANGE OF FINISHES

### EXTERIOR



White



Black

### CARPET



Light Gray



Dark Gray

### DOOR HANDLE



Black



Silver

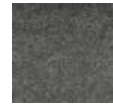
### INTERIOR



EG-04 Silver Gray



EG-08 Moon Gray



EG-10 Deep Gray



EG-02 Water Gray



EG-20 Deep Blue



EG-23 Turquoise



EG-30 Dark Camel

### ALUMINUM CORNERS



White



Black



Gray

### ADD ONs

Seismic bracing  
One-touch LCD control panel  
LCD TV mount bracing  
White glass board  
Personalized company branding  
External fire extinguisher unit

Ethernet ports  
Bluetooth speakers  
Frosted film glass  
Occupancy lights





# ACCESSORIES



■ **TOUCHPAD WITH FACELIGHT  
CONTROL PANEL**

■ **OCCUPANCY LIGHTS**

■ **SEISMIC BRACING**

■ **LCD TV MOUNT BRACKET**

■ **WHITE GLASS BOARD**

■ **ETHERNET PORTS**

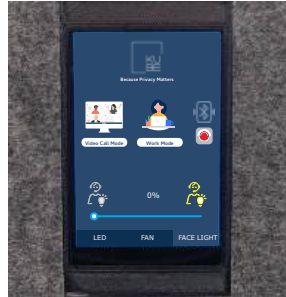
■ **PERSONALIZED COMPANY BRANDING**

■ **BLUETOOTH SPEAKERS**

■ **FROSTED FILM GLASS**

■ **EXTERNAL FIRE EXTINGUISHER UNIT**

■ **SMART/AUTOMATIC DOOR LOCK\***  
**(Only available on select units)**



Touchpad



Occupancy Lights



LCD TV Mount Bracket



Smart Lock



Whiteboard



Bluetooth Speaker



ISO 9001:2015  
CERTIFIED COMPANY

ISO 14001:2015  
CERTIFIED COMPANY





Because privacy matters!

[www.kubebooth.com](http://www.kubebooth.com) | [info@kubebooth.com](mailto:info@kubebooth.com)

