



Because privacy matters!



Kubebooth

Supply Arrangement Catalogue

Government of Canada



SA E60PQ-140003-098



OVERVIEW

GCworkplace is the shared vision for the Government of Canada workplace, established and supported by the Government of Canada Fit-up Standards. GCworkplace guides the delivery of workplace modernization projects and solutions offered by Public Services and Procurement Canada (PSPC) to federal organizations.

The Government of Canada Workplace Fit-up Standards and the supporting tools provide the foundation for creating innovative activity-based work environments. These environments accommodate diverse work styles, meet accessibility requirements, support alternative work strategies, incorporate modern technology, and integrate sustainable design principles.

GCworkplace Dimensions

FLEXIBLE



01

HEALTHY



02

EFFICIENT



03

INCLUSIVE



04

COLLABORATIVE



05

DIGITAL



06

GREEN



07

PRODUCT INFO & ORDERING ITEMS

The exterior finish of all products is G1 (Black or White).

Freight delivery charges are to be listed as a separate line item on the purchase order.

Installation charges are to be quoted on an order by order basis and listed as a separate line item on the purchase order.

Delivery is stated as 3 -5 weeks after receipt of order, and installation will be carried out during normal working hours, eg. 9:00 AM to 5:00 PM, Monday through Friday.

We accept visa and mastercard credit cards with an additional 2.4% charge on the final amount.

**CALL UPS AGAINST THIS
SUPPLY ARRANGEMENT
MUST BE ISSUED TO**

KUBEBOOTH INC.

40 Penn Dr. , Toronto
Ontario M9L 2A9
www.kubebooth.com
info@kubebooth.com

AUTHORIZED KUBEBOOTH DEALERS



ATLANTIC REGION

Atlantic Business Interiors

Nova Scotia

30 Troop Avenue
Dartmouth, Nova Scotia
B3B 1Z1
Phone: (902) 468-3200
Fax: (902) 468-5051

New Brunswick – Moncton

Phone: (506) 866-6738

New Brunswick – Saint John

28 McIlveen Drive, Unit 12
Saint John, New Brunswick
E2J 4Y7
Phone: (506) 672-0750
Fax: (506) 674-1435

Newfoundland and Labrador

21 Mews Place
St. John's, Newfoundland
A1B 4N2
Phone: (709) 576-6405
Fax: (709) 576-6418

Atlantic Business Interiors

Prince Edward Island

25 Fourth Street, Suite 400
Charlottetown,
Prince Edward Island
C1E 2B4
Phone: (902) 566-9700
Fax: (902) 566-4978

ONTARIO REGION

Contemporary Office Interiors

GTA Distribution Center

Phone 416-364-5111
Address 6225 Danville Road Mississauga,
ON L5T2H7

Toronto

Phone 416-364-5111
Address 56 Temperance St, 2nd Floor
Toronto, ON M5H 3V5

The Business Line Inc.

GTA

7282 Black Walnut Trail,
Mississauga, ON, L5N 7M6
Phone: (905) 785-8120
Cell: (647) 401-8120
Email: sam.paul@tbl.ca

NATIONAL CAPITAL REGION

Brezach Solutions Inc.

5380 Canotek Rd, Unit 11
Ottawa, ON, K1J 1H7
Phone: 613-742-0051
Email: info@brezach.com

Capital Office Interiors

16 Antares Drive
Ottawa, Ontario
K2E 7Y7
Phone: (613) 723-2000

Sakku Ventures

Phone: (613) 714-9990
Email: sales@sakkuventures.ca



A faint, light blue line drawing of a booth layout is visible on the left side of the image. It shows a rectangular booth with a desk, a chair, and various equipment like a monitor and a printer.

THE SIGNATURE COLLECTION

www.kubebooth.com

SIGNATURE COLLECTION



KSelfi Signature Booth (Government Only)

The KSelfi (Government only) by Kubebooth is a single-person soundproof office pod designed to enhance productivity and well-being in the workplace. This compact booth provides a private enclave for focused tasks, quick rejuvenation, or uninterrupted learning.



STANDARD FEATURES

- 36 dB certified noise reduction
- 100 air exchanges/hour
- Mobile with casters
- Energy efficient
- BIFMA Level 2 approved
- ISO 14001, ISO 9001, MAS, UL/ULC certified
- Pre-engineered knockout hole for sprinklers
- Plug n Play
- Worktop not included

OCCUPANTS: 1
VISUAL PRIVACY: Low-Medium
ACOUSTIC PRIVACY: High

MSRP: \$27,906

TECHNICAL INFO

Dimensions:

Overall- W: 56" - D: 37.5" - H: 88"

Inside- W: 48" - D: 36" - H: 80"

Door - H: 88" x W: 32"

Front Side Panel - H: 88" x W: 12"

Weight: 950 lbs/431 kg

Data Center: UL approved, 1 USB A port,
1 USB C port, 2 Simplex outlets
Motion detector (controls lights & fan)

10mm clear tempered glass
Ceramic painted borders
12V LED light bar magnet, 3500k, 12VDC
Galvanized steel frames
10ft cord 120v/15Amp
D pull handle
Safety Stripe

RANGE OF FINISHES

EXTERIOR



White



Black

CARPET



Light Gray



Dark Gray

DOOR HANDLE



Black



Silver

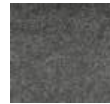
INTERIOR



EG-04 Silver Gray



EG-08 Moon Gray



EG-10 Deep Gray



EG-02 Water Gray



EG-20 Deep Blue



EG-23 Turquoise



EG-30 Dark Camel

ALUMINUM CORNERS



White



Black

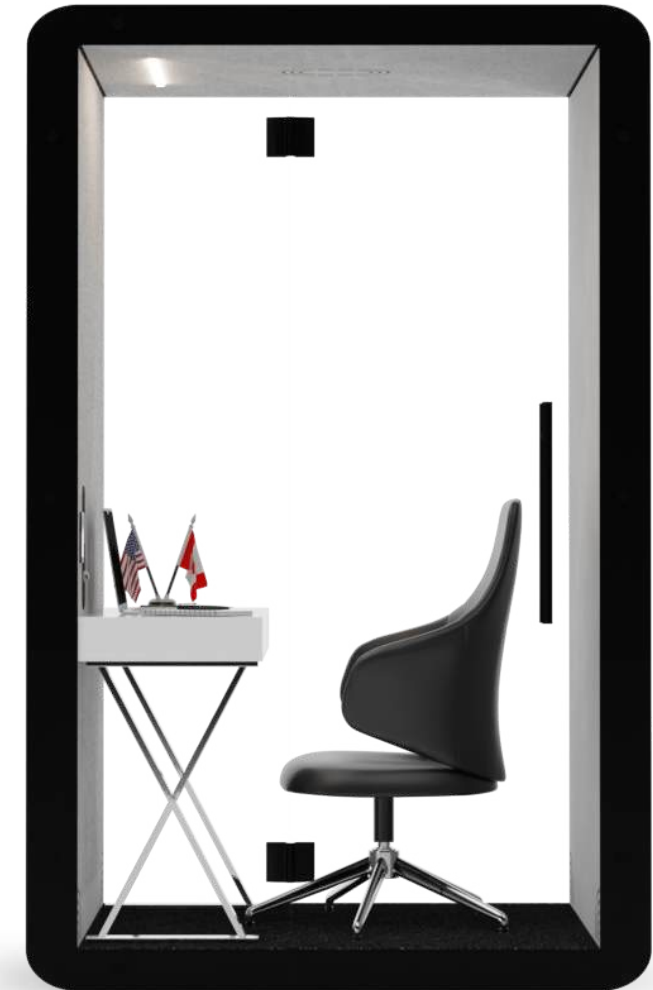


Gray

ADD ONs

Seismic bracing
One-touch LCD control panel
LCD TV mount bracing
White glass board
Personalized company branding
External fire extinguisher unit

Ethernet ports
Bluetooth speakers
Frosted film glass
Occupancy lights



SIGNATURE COLLECTION



Kwe Plus Signature Booth

The Kwe Plus Signature Booth is perfect for groups of 2-4 people, offering a spacious yet private area for meetings, brainstorming sessions, or team collaboration. Its soundproof design ensures quiet and comfort, making it a stylish and practical addition to any workspace.



STANDARD FEATURES

- 36 dB Certified noise reduction
- 100 air exchanges/hour
- Mobile with casters
- Extendable for 6 and 8 people
- Energy efficient
- BIFMA Level 2 approved
- ISO 14001, ISO 9001, MAS, UL/ULC certified
- Pre-engineered knockout hole for sprinklers
- Plug n Play
- Worktop included: L: 31" x W: 24"

OCCUPANTS: 2-4

VISUAL PRIVACY: Low-Medium

ACOUSTIC PRIVACY: High

MSRP: \$36,304

TECHNICAL INFO

Dimensions:

Overall- W: 88" - D: 48" - H: 88"

Inside- W: 80" - D: 47" - H: 80"

Door - H: 88" x W: 32"

Front Side Panels - H: 88" x W: 28"

Rear Panel - H: 88" x W: 44"

Weight: 1525 lbs/692 kg

Data Center: UL approved, 1 USB A port,
1 USB C port, 2 Simplex outlets
Motion detector (controls lights & fan)

10mm clear tempered glass
Ceramic painted borders
12V LED light bar magnet, 3500k, 12VDC
Galvanized steel frames
10ft cord 120v/15Amp
Safety Stripe

RANGE OF FINISHES

EXTERIOR



White



Black

CARPET



Light Gray



Dark Gray

DOOR HANDLE



Black



Silver

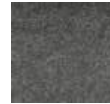
INTERIOR



EG-04 Silver Gray



EG-08 Moon Gray



EG-10 Deep Gray



EG-02 Water Gray



EG-20 Deep Blue



EG-23 Turquoise



EG-30 Dark Camel

ALUMINUM CORNERS



White



Black



Gray

ADD ONs

Seismic bracing
One-touch LCD control panel
LCD TV mount bracing
White glass board
Personalized company branding
External fire extinguisher unit

Ethernet ports
Bluetooth speakers
Frosted film glass
Occupancy lights
Pair of Comfort 45" Sofa







THE FLOORLESS COLLECTION

NOTE: The floorless collection needs to be drilled to the floor for safety purposes.

www.kubebooth.com

FLOORLESS COLLECTION



KSelfi Floorless Booth (Government Only)

The KSelfi (Government only) Floorless Booth offers a spacious, soundproof environment for virtual meetings and focused work, designed for accessibility and comfort while seamlessly integrating into any office aesthetic.



STANDARD FEATURES

- Class A noise reduction
- 100 air exchanges/hour
- Energy efficient
- BIFMA Level 2 approved
- ISO 14001, ISO 9001, MAS, UL/ULC certified
- Pre-engineered knockout hole for sprinklers
- Plug n Play
- Worktop not included

OCCUPANTS: 1

VISUAL PRIVACY: Low-Medium

ACOUSTIC PRIVACY: Medium-High

MSRP: \$30,944

TECHNICAL INFO

Dimensions:

Overall- W: 56" - D: 37.5" - H: 88"

Inside- W: 48" - D: 36" - H: 84"

Door - H: 88" x W: 32"

Rear Panel - H: 88" x W: 44"

Front Side Panel - H: 88" x W: 12"

Weight: 900 lbs/408 kg

Data Center: UL approved, 1 USB A port,
1 USB C port, 2 Simplex outlets
Motion detector (controls lights & fan)

10mm clear tempered glass
Ceramic painted borders
12V LED light bar magnet, 3500k, 12VDC
Galvanized steel frames
10ft cord 120v/15Amp
Safety Stripe

RANGE OF FINISHES

EXTERIOR



White



Black

CARPET



Light Gray



Dark Gray

DOOR HANDLE



Black



Silver

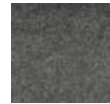
INTERIOR



EG-04 Silver Gray



EG-08 Moon Gray



EG-10 Deep Gray



EG-02 Water Gray



EG-20 Deep Blue



EG-23 Turquoise



EG-30 Dark Camel

ALUMINUM CORNERS



White



Black



Gray

ADD ONs

Seismic bracing
One-touch LCD control panel
LCD TV mount bracing
White glass board
Personalized company branding
External fire extinguisher unit

Ethernet ports
Bluetooth speakers
Frosted film glass
Occupancy lights



FLOORLESS COLLECTION



Kwe Plus Floorless Booth

Enhance teamwork with the Kwe Plus Floorless Booth, designed for 2-4 users, offering customizable finishes, advanced connectivity options, and a serene environment for productive discussions.



STANDARD FEATURES

- Class A noise reduction
- 100 air exchanges/hour
- Extendable for 6 and 8 people
- Energy efficient
- BIFMA Level 2 approved
- ISO 14001, ISO 9001, MAS, UL/ULC certified
- Pre-engineered knockout hole for sprinklers
- Plug n Play
- Worktop included: L: 31" x W: 24"

OCCUPANTS: 2-4

VISUAL PRIVACY: Low-Medium

ACOUSTIC PRIVACY: Medium-High

MSRP: \$39,590

TECHNICAL INFO

Dimensions:

Overall- W: 88" - D: 48" - H: 88"

Inside- W: 80" - D: 47" - H: 84"

Door - H: 88" x W: 32"

Rear Panel - H: 88" x W: 44"

Front Side Panels - H: 88" x W: 28"

Weight: 1150 lbs/527 kg

Data Center: UL approved, 1 USB A port,
1 USB C port, 2 Simplex outlets
Motion detector (controls lights & fan)

10mm clear tempered glass

Ceramic painted borders

12V LED light bar magnet, 3500k, 12VDC

Galvanized steel frames

10ft cord 120v/15Amp

Safety Stripe

RANGE OF FINISHES

EXTERIOR



White



Black

CARPET



Light Gray



Dark Gray

DOOR HANDLE



Black



Silver

INTERIOR



EG-04 Silver Gray



EG-08 Moon Gray



EG-10 Deep Gray



EG-02 Water Gray



EG-20 Deep Blue



EG-23 Turquoise



EG-30 Dark Camel

ALUMINUM CORNERS



White



Black



Gray

ADD ONs

Seismic bracing

One-touch LCD control panel

LCD TV mount bracing

White glass board

Personalized company branding

External fire extinguisher unit

Ethernet ports

Bluetooth speakers

Frosted film glass

Occupancy lights

Pair of Comfort 45" Sofa



ACCESSORIES



■ **TOUCHPAD WITH FACELIGHT
CONTROL PANEL**

■ **OCCUPANCY LIGHTS**

■ **SEISMIC BRACING**

■ **LCD TV MOUNT BRACKET**

■ **WHITE GLASS BOARD**

■ **ETHERNET PORTS**

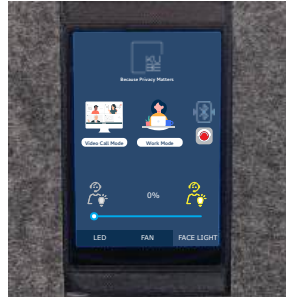
■ **PERSONALIZED COMPANY BRANDING**

■ **BLUETOOTH SPEAKERS**

■ **FROSTED FILM GLASS**

■ **EXTERNAL FIRE EXTINGUISHER UNIT**

■ **SMART/AUTOMATIC DOOR LOCK*
(Only available on select units)**



Touchpad



Occupancy Lights



LCD TV Mount Bracket



Smart Lock



Whiteboard



Bluetooth Speaker

ISO 9001:2015
CERTIFIED COMPANY

ISO 14001:2015
CERTIFIED COMPANY





Because privacy matters!

www.kubebooth.com | info@kubebooth.com

